

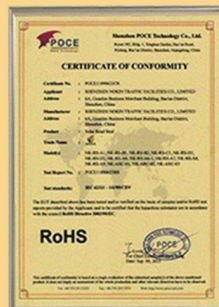
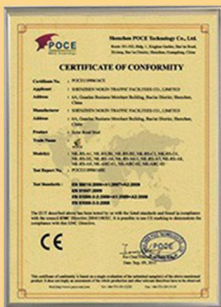


NOKIN



NOKIN GROUP CO., LIMITED
SHEN ZHEN NOKIN TRAFFIC FACILITIES CO., LIMITED

Company Introduction



NOKIN TRAFFIC FACILITIES established in 2001, is a medium manufacturer, distributor and exporter with professional R&D team in producing solar traffic safety products widely used on the highway, city road, transportation, including solar road studs, reflective road studs, solar grounding lights, solar traffic signals, and related traffic safety products.

NOKIN TRAFFIC FACILITIES always implement the modern road management system, adhere to the scientific and technological innovation. We put personalization into our products and constantly develop new products with super technology; high luminous efficiency and lower power consumption in solar warning lights series, solar traffic signals series, solar traffic lights series.

All our products are ISO9001, CE certificate, RoHS approved and well received by our domestic clients and abroad clients from Australia, Slovakia, France, UK, Argentina, Romania, Indonesia, Middle East and Africa.

NOKIN TRAFFIC FACILITIES have been devoting themselves to researching, developing and producing solar traffic products with high starting points. We penetrate and anticipate market in the world with innovation spirits.

We are willing to cooperate with you and create wonders one after another!

Reflective Road Stud Series

ADVANTAGE

- “ASTM D4280 & EN1463-1 standard”
- “Canada DBM mold insert and Taiwan PMMA make a lens with highest reflectivity”
- “Highest reflectivity-fade resistance”
- “Special groove design to improve reflectivity and compression resistance”
- “Lowest cost, good adhesive ability, easy to install makes it popular on global market”

REFLECTIVITY

WHITE COLOR

Entrance Angle ($\beta_H, \beta_v=0^\circ$)	Observation Angle α	EN1463-1 (mcd/lx)	Sample 1 (mcd/lx)	Sample 2 (mcd/lx)	Sample 3 (mcd/lx)
$\pm 15^\circ$	2°	2.5	3.8	5.1	4.6
$\pm 10^\circ$	1°	25	39	50	47
$\pm 5^\circ$	0.3°	220	345	442	416

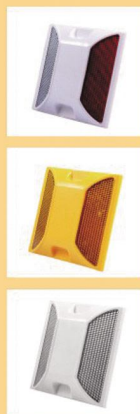
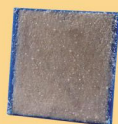
(White mcd/lux) (Observation Angle=0.2 degree)

Text Point	ASTM D4280	Sample 1	Sample 2	Sample 3
20L	112	178	275	245
0.2deg	279	628	702	612
20R	112	196	249	203

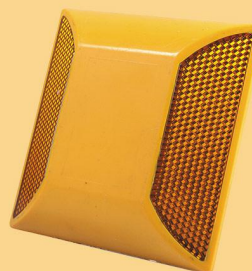
NK-1001



Color: Red, White, Yellow, Blue, Green
 Size: 100*100*18mm
 Body material: ABS
 Filling: Epoxy+Quartz sand
 Lens material: PMMA



NK-1002



Color: Red, White, Yellow, Blue, Green
 Size: 100*100*20mm
 Body material: ABS
 Filling: Epoxy+Quartz sand
 Lens material: PMMA



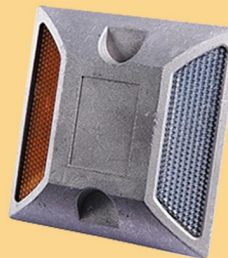
NK-1003



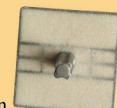
Color: Red, White, Yellow, Blue, Green
 Size: 116*82*18mm
 Body material: ABS
 Filling: Epoxy+Quartz sand
 Lens material: PMMA



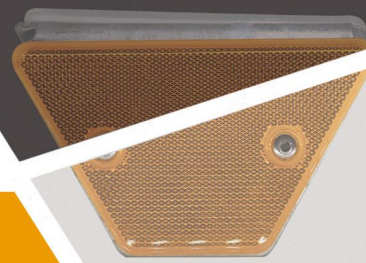
NK-1004



Color: Red, White, Yellow, Blue, Green
 Size: 102*102*22+50mm
 Spike: 50mm
 Body material: Aluminum
 Filling: Epoxy+Quartz sand
 Lens material: PMMA

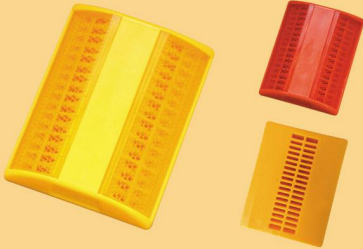


Reflective Road Stud Series



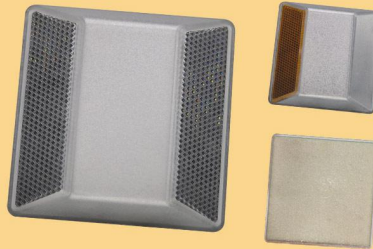
NOKIN

NK-1005



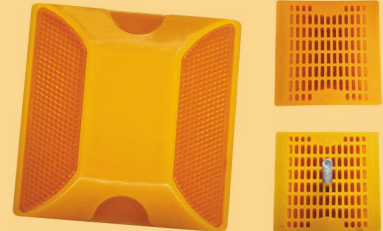
Color: Red, White, Yellow, Blue, Green
 Size: 103*80*18mm
 Body material: ABS
 Compression: 16 T
 Lens material: PMMA

NK-1006



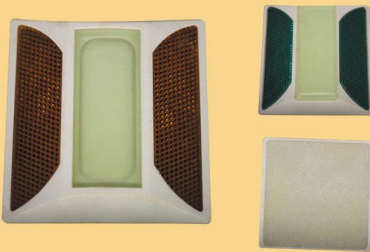
Color: Red, White, Yellow, Blue, Green
 Size: 100*100*20mm
 Body material: PC
 Filling: Epoxy+Quartz sand
 Lens material: PC

NK-1007



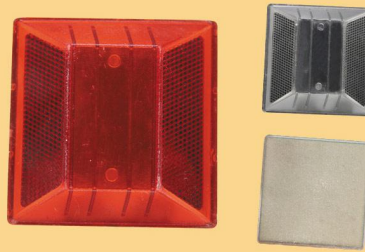
Color: Red, White, Yellow, Blue, Green
 Size: 100*100*20mm
 Body material: ABS
 Model: With shank; Flat bottom.
 Lens material: PMMA

NK-1008



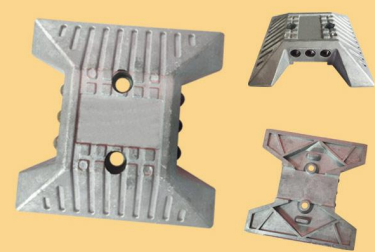
Color: Red, White, Yellow, Blue, Green
 Size: 100*100*20mm
 Body material: ABS+Phosphor Powder
 Filling: Epoxy+Quartz sand
 Lens material: PMMA

NK-1009



Color: Red, White, Yellow, Blue, Green
 Size: 100*100*20mm
 Body material: PMMA
 Filling: Epoxy+Quartz sand
 Lens material: PMMA

NK-1010



Color: Red, White, Yellow, Blue, Green
 Size: 120*120*28mm
 Body material: Aluminum
 Reflection: Glass bead
 Lens material: Glass

NK-1011



Color: Red, White, Yellow, Blue, Green
 Size: 100*100*20mm
 Body material: PMMA
 Filling: Epoxy+Quartz sand
 Lens material: PMMA

NK-GS-01



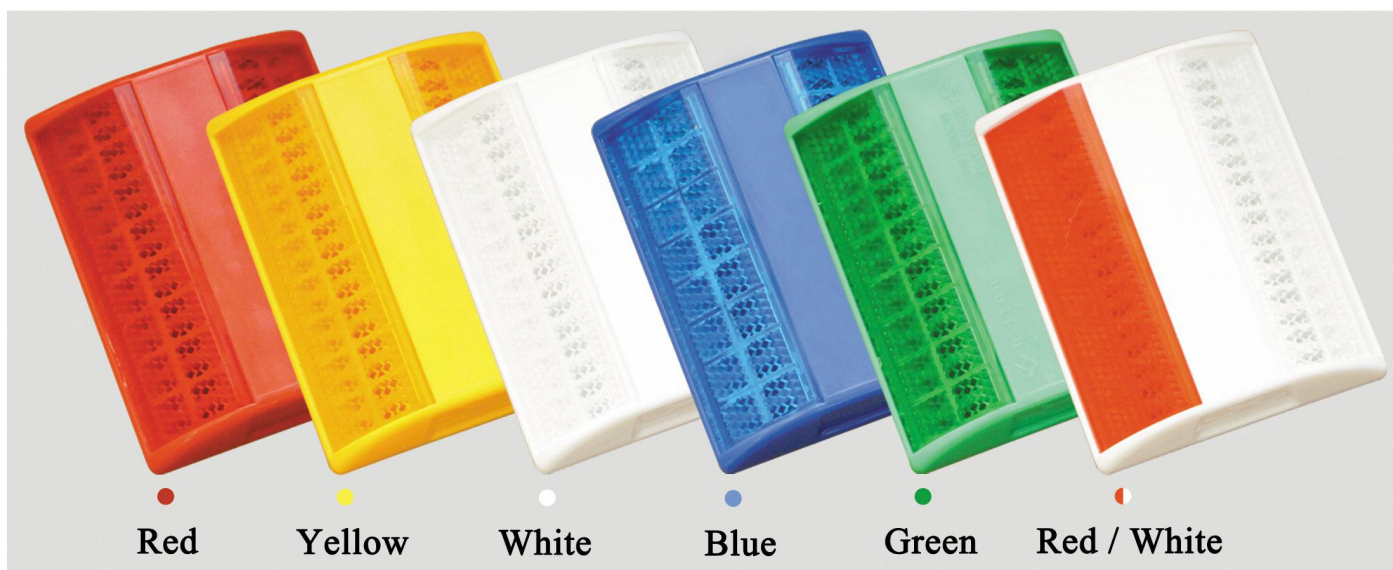
Color: Red, White, Yellow, Blue, Green
 Size: 122*70*40mm
 Body material: ABS+Aluminum+Steel+Zinc
 Model: Double sided; Single side
 Lens material: PMMA

NK-GS-02



Color: Red, White, Yellow, Blue, Green
 Size: 150*95*63mm Thickness:15mm
 Body material: PMMA+ABS+TPR
 Model: Double sided; Single side
 Lens material: PMMA

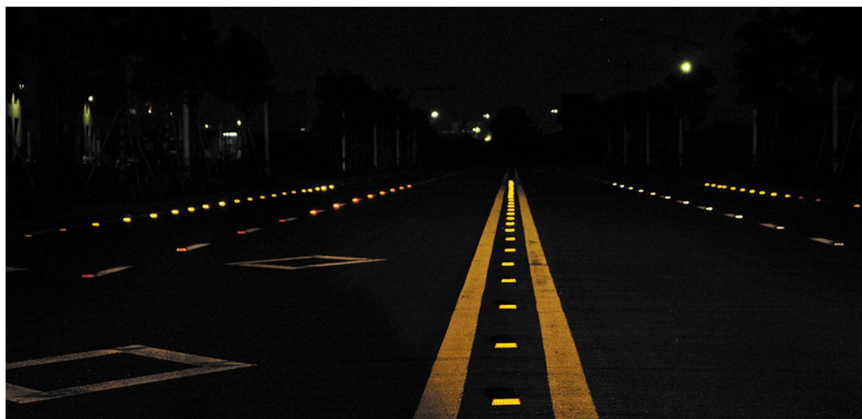
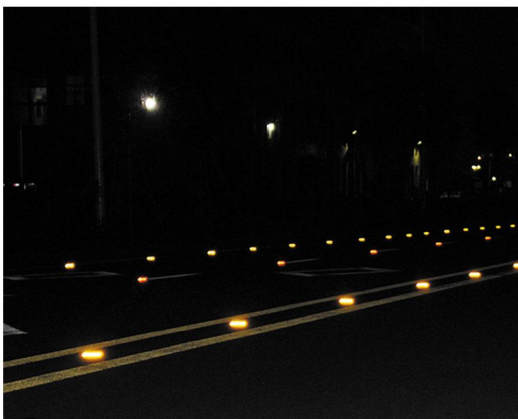
Reflective Road Stud NK-1005



1. Material: PC/ABS
2. Reflective material: Impact resistant PMMA
3. Compression: 16 T
4. Color: Red, Yellow, White, Blue, Green
5. Size: 103mm x 80mm x 18mm
6. Weight: 90g \pm 3g



- 1: Bore a hole with 24MM depth and 100MM dia, and remove residual asphalt concrete.
- 2: Inject some of epoxy resin or asphalt mastic when the hole dry enough.
- 3: Paste the road studs, The reflectors should face the coming direction of the vehicles.





NOKIN GROUP CO., LTD

SHEN ZHEN NOKIN TRAFFIC FACILITIES CO., LTD

Adds: 4/F, C1 Block, Xiangli Industrial Zone, Fuyuan Road,
Fuyong Town, Bao'an District, Shenzhen, China

Sales Dep 1: +86 755-23594730

Mobile: +86 13602600950

Whatsapp: +86 13602600950

E-mail: info@nokintraffic.com

Skype: [nokintraffic](https://www.skype.com/name/nokintraffic)

Web 1: <http://www.nk-roadstud.com>

Web 2: <http://www.roadstudlight.com>

Web 3: <http://www.solar-ledstreetlight.com>

Web 4: <http://nktraffic.en.alibaba.com>